



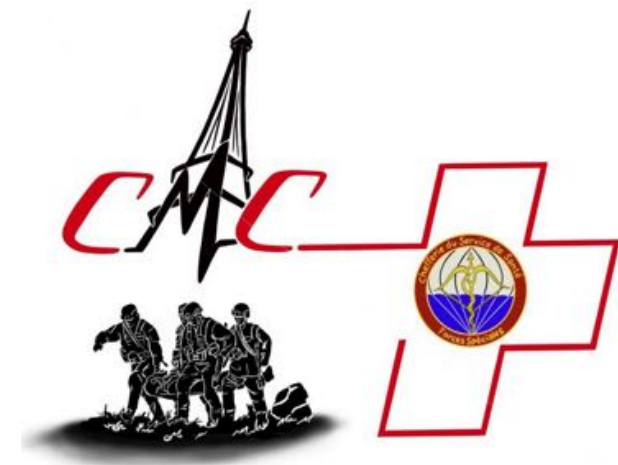
Deployment of the Surgical Life-saving Module (SLM) in 2017:



lessons learned in setting up and training operational surgical units



SLM members.



SLM...



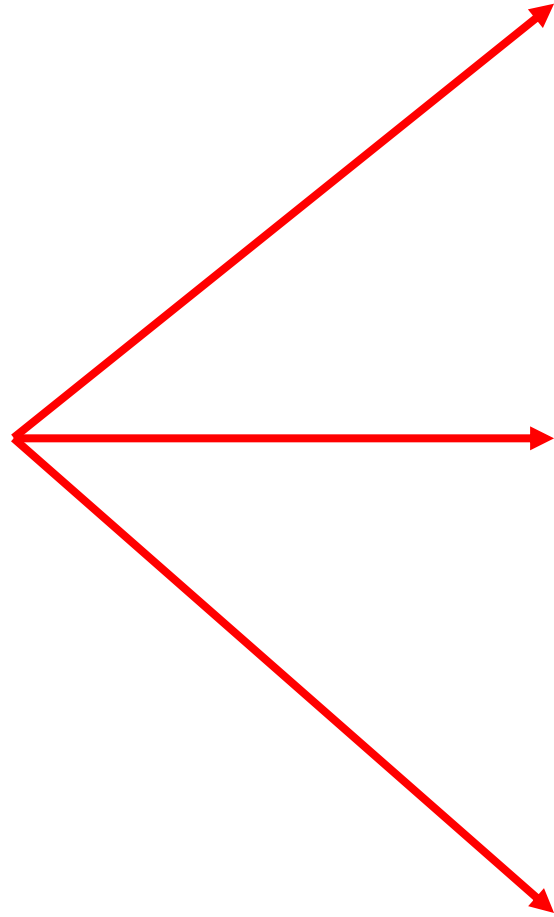
SPECIAL FORCES



LOCAL MEDICAL EVACUATION CHAIN



The SLM...





SLM : personnel staffing



Nurse anesthetist

Anesthesiologist/
intensivist

General surgeon

Head-neck
surgeon

Operating room
nurse

Combat medic

SLM SETUP



1st SLM SETUP



Emergency room



Operating room



Supply kit

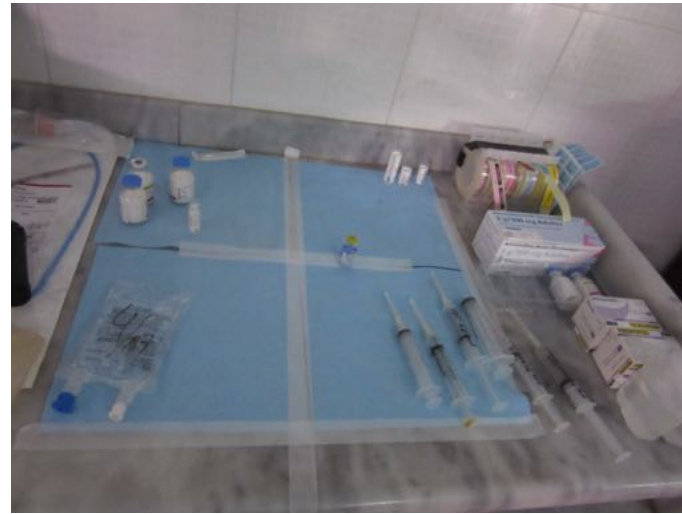
1st SLM DEPLOYMENT



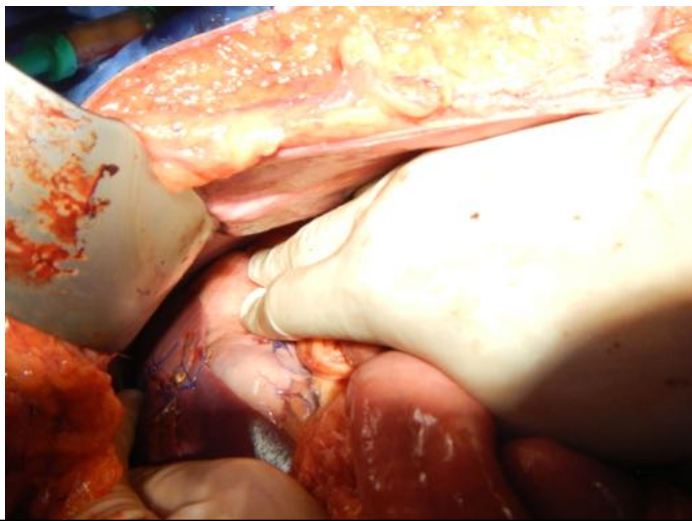
2nd DEPLOYMENT



NURSING STATION



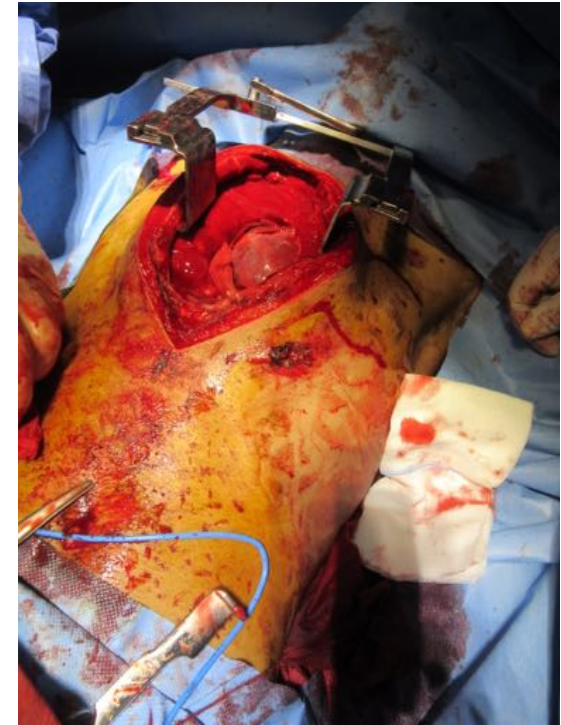
ABDOMEN INJURIES / PROCEDURES



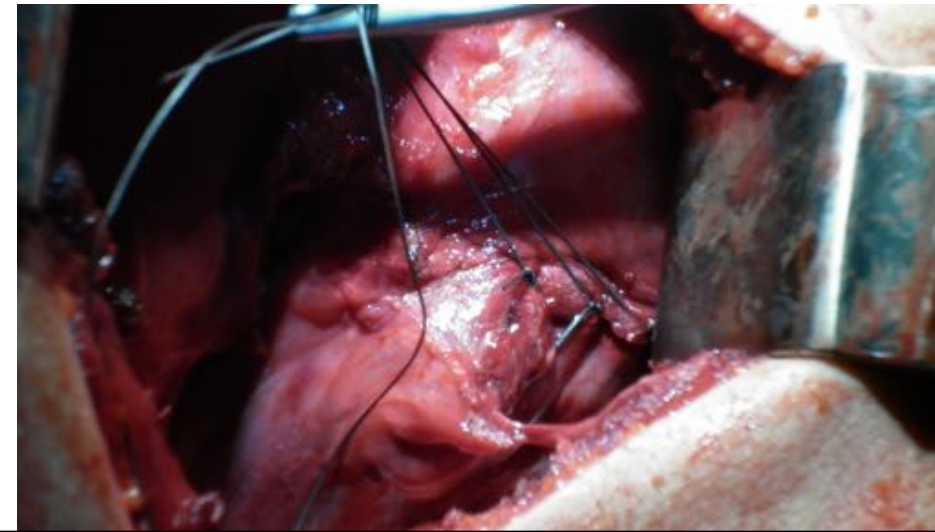
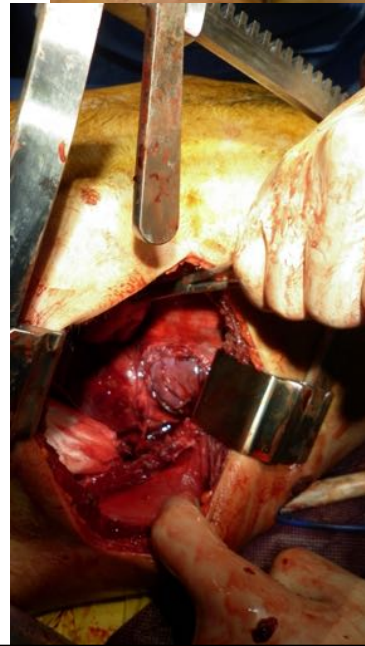
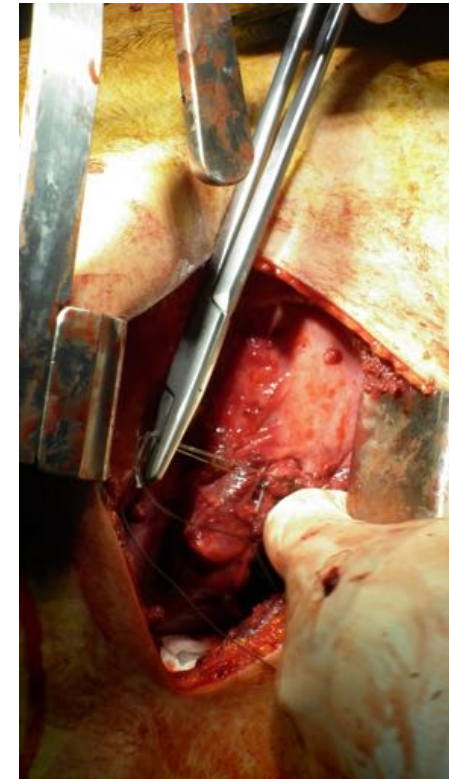
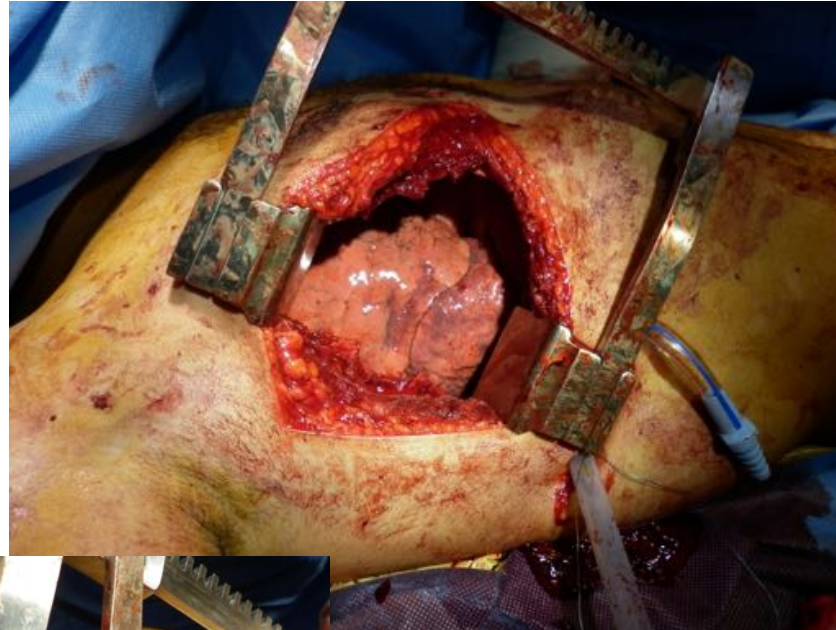
ABDOMEN INJURIES / PROCEDURES



THORAX INJURIES / PROCEDURES



THORAX INJURIES / PROCEDURES



LIMBS INJURIES / PROCEDURES



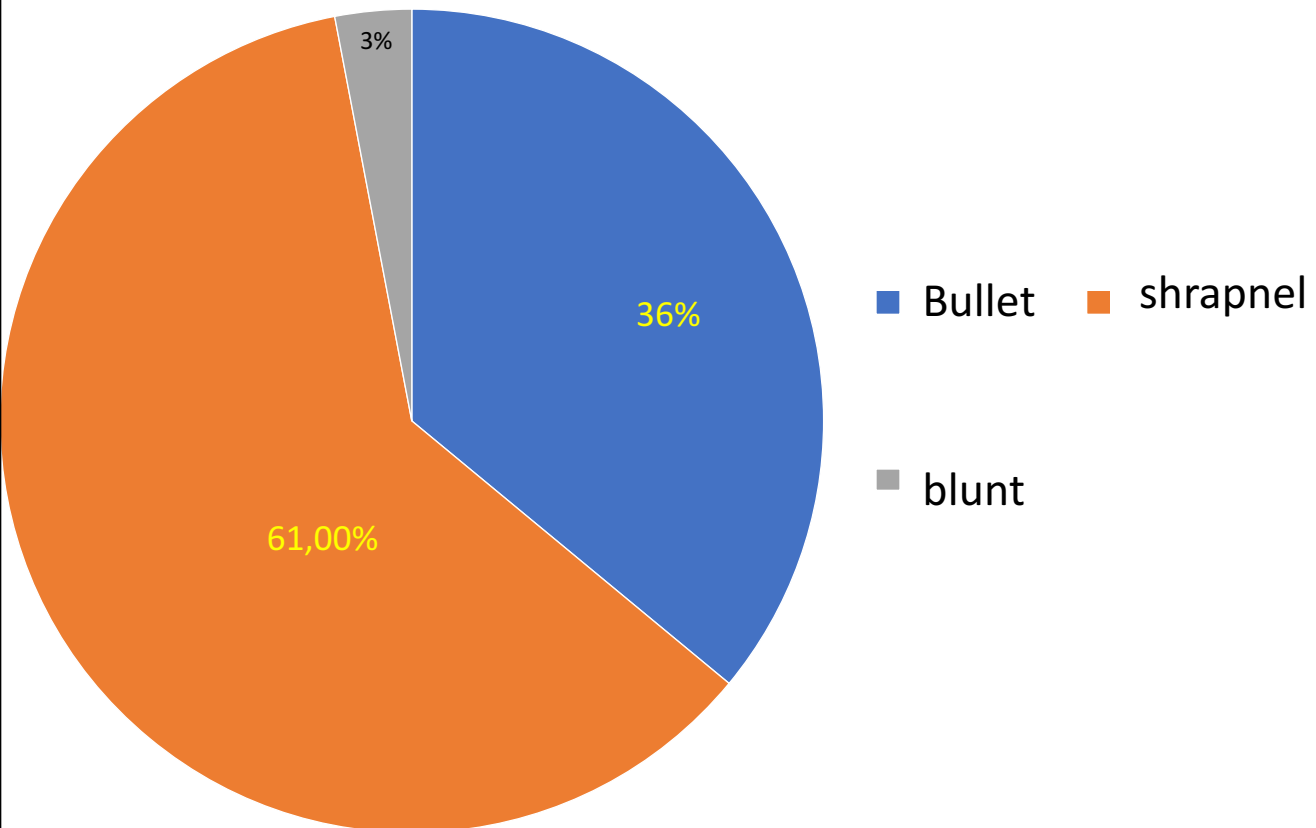
NEUROSURGERY





Results

- 2017
- 157 casualties
- 190 surgical procedures





Results

Demographic:

Males 100%

41 successive waves

Mean : 4 casualties per wave

Injury profil

Severity:

Average ISS : 8,5 (1-25)

ISS>15: 26

Average NISS : 10,8 (1-75)

NISS>15: 34

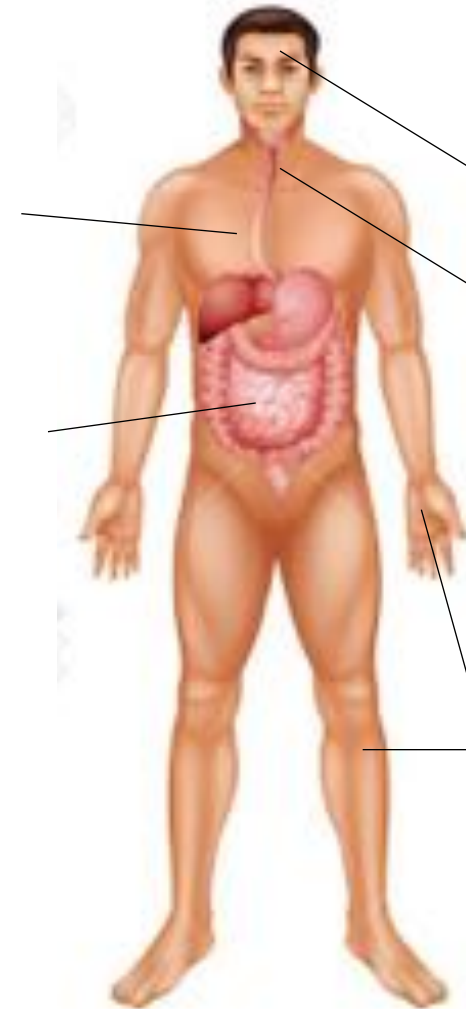
Thorax : 18%

Abdomen: 13%

Head : 11%

Neck : 2%

Limbs : 56%,





Results

Emergency room	Nbr
Wound exploration Debridement Dressing	126
Thoracic drain	12
Limb splint	7
Femoral traction	1

Surgical procedures	Nbr
Laparotomy	16
Amputations	12
Thoracotomy	7
Limb fasciotomy	2
External fixator	2
Cervicotomy	1



Results Digestive surgery

Hemostatic procedures		
Liver packing	DC	1
Liver suture		1
Splenectomy	DC	4
Total nephrectomy	DC	2
Retroperitoneal packing	DC	3
Pelvic packing	DC	2
Mesentery hemostasis (suture)		2

Reconstructive procedures		
Colectomy with anastomosis	DC	5
Small bowel resection no anastomosis	DC	13
Gastric suture		5
Small bowel or colon suture		4
Small bowel resection + anastomosis		4
Bladder suture + cystostomy probe		1
Diaphragmatic suture		3

Results Thoracic surgery

Hemostatic procedures

Atypical pulmonary resection or « wedge »	11
Thoracic aorta clamping	3
Pericardotomy	3
Internal cardiac massage	2
Pulmonary hilum clamping	2
Intracardiac adrenaline injection	1





Results TRANSFUSION

- Red blood cells bags : 12
- French lyophilized plasma unit : 7
- Human fibrinogen : 5

- No whole blood transfusion
(no donor)





Mortality

- 5 casualties died at the SLM
- Mortality rate 3%

- 2 Lacerated craniocerebral injuries
- 2 Chest wounds
- 1 Diffuse shrapnel injury



Conclusions



- Mortality <5%
- Proof of SLM concept
- Continuous management of equipment logistic ++
- Massive influx : TRIAGE
- Surgical versatility

TRIAGE



SUPPLY

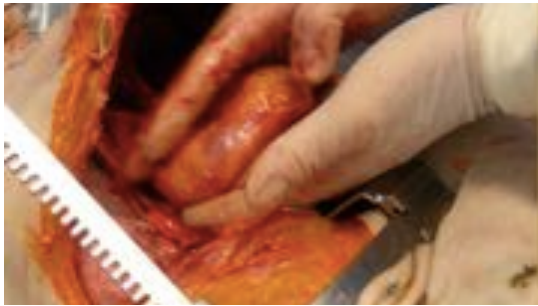


« CCP » UNITS

STERILIZATION



CACHIRMEX



CeFOS



SOON...



THANK YOU FOR OUR ATTENTION

